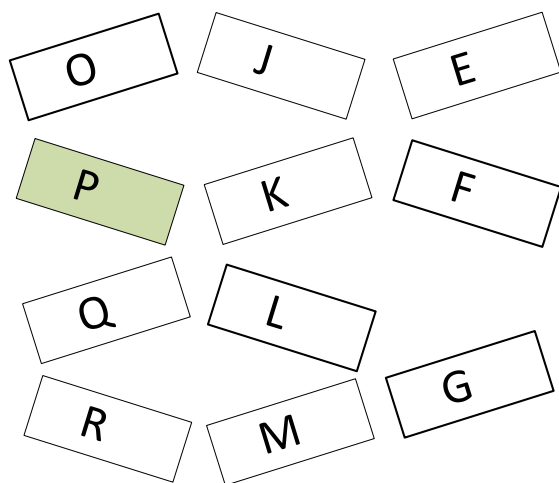


Aalto ARTS /

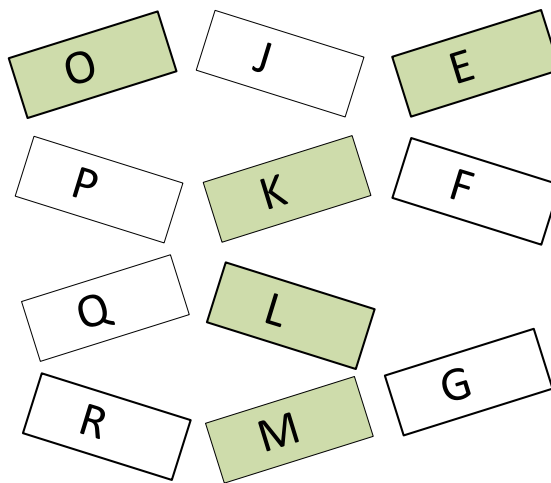
Proposal for students' stations floors 1-3

Floor 1
90



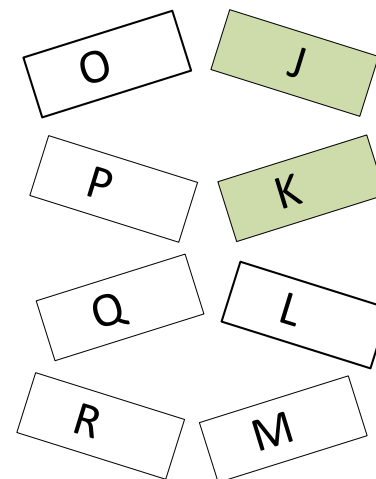
'Digital stations'

Floor 2
450



'Artifact station'
'Visualization station'
'Environment Interaction station'
'Pop up project rooms'
'Virtual station'

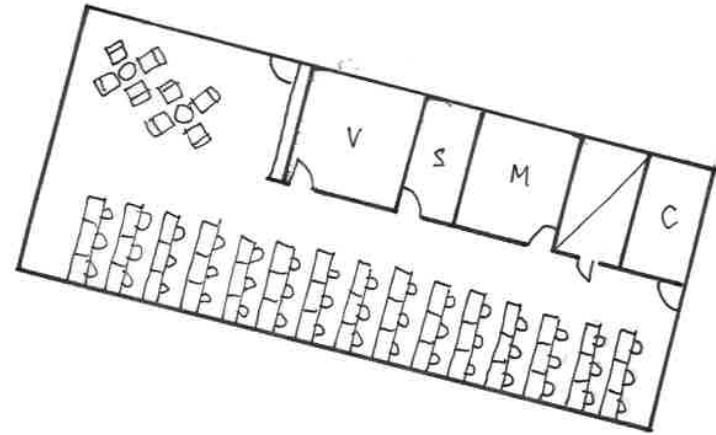
Floor 3
180



'Spatial station'
'Station of new openings'

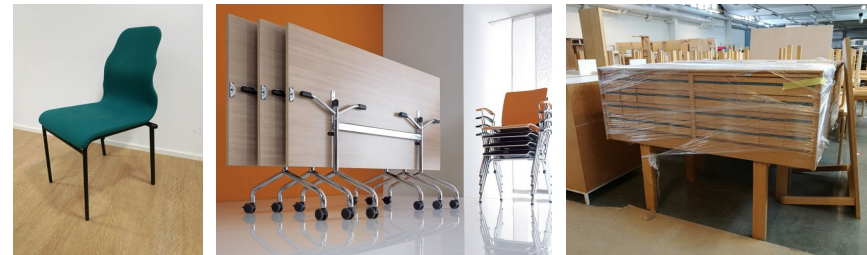
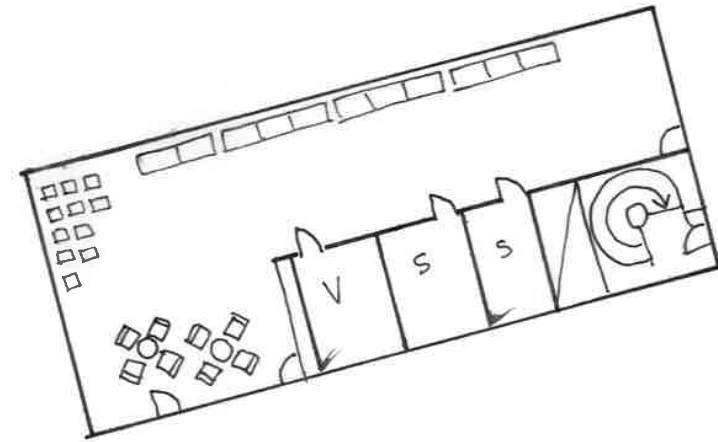
DIGITAL STATION (1st floor - P)

- OUTCOME: DIGITAL
- USER: EVERYONE, ESPECIALLY FILM, MEDIA
- Character: Computer based working
- Seats: 51 pcs
- Furniture:
 - min 45 pcs workstation with desktop computer
desk NEW
office chair NEW
 - sitting area
 - 6 pcs YW Papi chair
 - 1 pc desk NEW
- Väre-workshop comments
 - Is there enough IT space? When critiques are at the same time, there will be overcrowding, students from each department needs computers that you can use freely for working



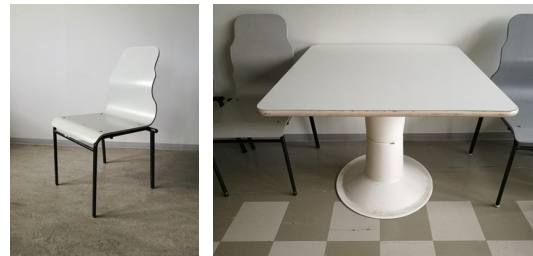
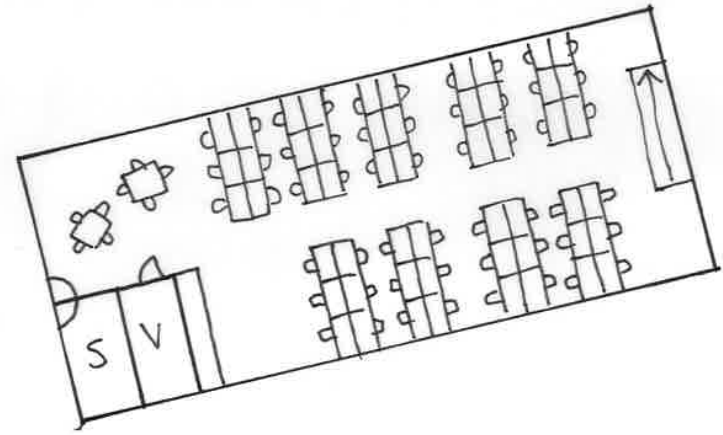
VISUALIZATION STATION (2nd floor - O)

- OUTCOME: VISUAL (DRAWING, PAINTING)
- USER: EVERYONE, ESPECIALLY ART, MEDIA
- Character: Light and airy studio space, suitable for producing art, needs additional storage space
- Seats: 96 pcs
- Furniture:
 - 70 pcs stackable small chair
YK University chair, green/turquoise/blue upholstery
 - 20 pcs stackable high stool NEW
 - x pcs easily moveable folding table (suitable for drawing) NEW
 - sitting area
3 pcs old drawers (without legs, with seat cushion)
 - 1 pc space divider NEW
- Väre-workshop comments
 - Be aware of overfurnishing studio spaces, ie filling them up with tables and chairs, must support various ways of working: big, small, installation experiments, performing arts etc.
 - Are project rooms only for “clean” work?
What about painting etc.?



ARTIFACT STATION (2nd floor - E)

- OUTCOME: ARTIFACT (OBJECT, PRODUCT, CLOTHING)
- USER: EVERYONE, ESPECIALLY DESIGN, ART
- Character: Desktop work for arts and crafts,
needs additional storage space
- Seats: 80 pcs
- Furniture:
 - 30 pcs workstation
desk & chair NEW
 - 24 pcs high workstation
high desk & high chair NEW
 - sitting area
 - 2 pcs YK Saturnus-table
 - 26 pcs YK University chair
- Väre-workshop comments
 - Some projects will last for the whole semester and there will be
lots of stuff everywhere.. prototypes, materials etc.
 - Need for prototyping space for students project work
 - Crafting space for making mock-ups and prototypes



POP UP STATION (2nd floor - K)

- CRITIQUES, BIG LECTURES, INFORMAL TEACHING ETC.
- USER: EVERYONE

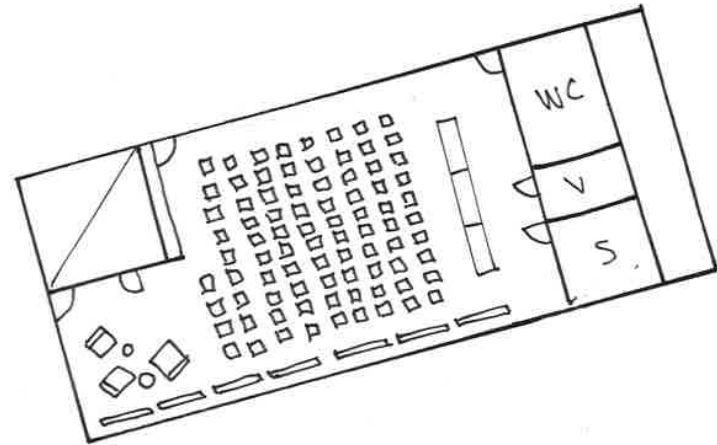
- Character: Easily customizable for different occasions
- Seats: 103 pcs

- Furniture:

- 100 pcs stackable small chair
YK University chair, black upholstery
- x pcs easily moveable folding table NEW
- sitting area
 - 3 pcs IS Gallery lounge chair
 - 2 pcs small table NEW
- 3 pcs space divider NEW

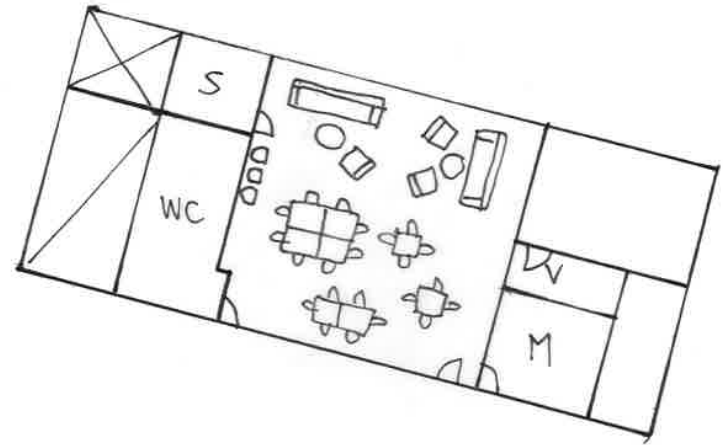
- Väre-workshop comments

- Big, easily customizable exhibition / lecture / seminar space
- Space for big (over 100) groups is missing
- Opportunity to move / reorganize furniture
- Spaces with not too many furniture



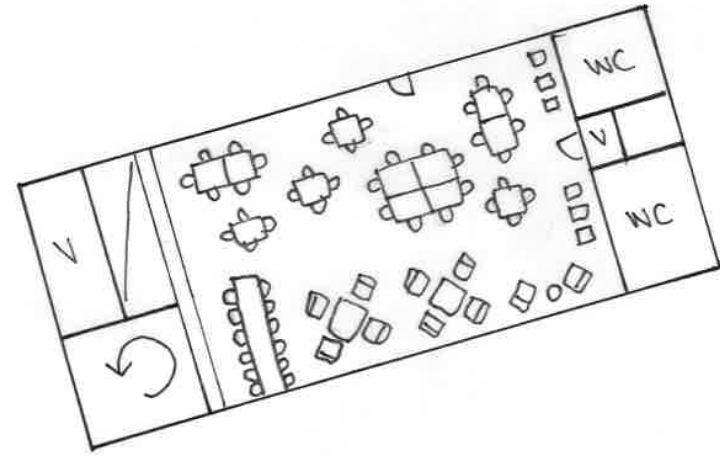
INTERACTION STATION (2nd floor - L)

- OUTCOME: GROUP WORK
- USER: EVERYONE, ESPECIALLY DESIGN, MEDIA
- Character: Various groups of tables and sofas, easily customizable for different group sizes
- Seats: 69 pcs
- Furniture:
 - 2 pcs ARTEK sofa (three-seater)
 - 3 pcs ML Kola rocking chair
 - 60 pcs YK University chair, gray upholstery
 - x pcs tables
 - e.g. YK Saturnus table (10 pcs) tai YK SP-table (x pcs)
 - 4 pcs desktop computers (fixed workstation)
- 3 pcs space divider NEW
- Väre-workshop comments
 - Need for more smaller group work spaces
 - Can/how can the big spaces be split to smaller spaces?
 - It is important that most of the interiors allow change
 - Movable & pinnable "walls"



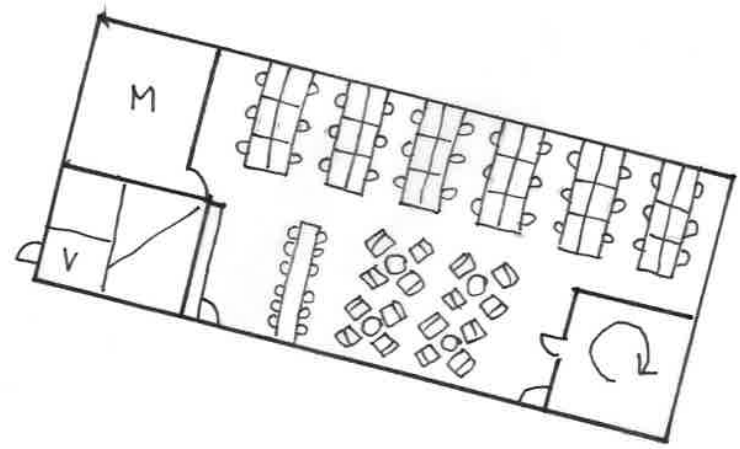
VIRTUAL STATION (2nd floor - M)

- OUTCOME: VIRTUAL
- USER: EVERYONE, ESPECIALLY MEDIA, DESIGN
- Character: Examining virtual content, easily customizable for different group sizes
- Seats: 92 pcs
- Furniture:
 - 12 pcs YK A509 rocking chair & A502 chair
 - 80 pcs YK University chair, gray
 - 20 pcs (approx) YK Saturnus-table
 - 4 pcs desktop computers (fixed workstation)
 - 12 pcs high workstations
 - x pcs high desk NEW
 - 12 pcs high chair NEW
- 3 pcs space divider NEW



SPATIAL STATION (3rd floor - J)

- OUTCOME: SPATIAL
- USER: EVERYONE, ESPECIALLY ARCHITECTURE, DESIGN
- Character: Desktop work, different levels/scales/types of working
- Seats: 95 pcs
- Furniture:
 - 36 pcs workstation
 - desk YK SP-table 70cm x 140cm
 - chair YK Sirkus 481X black
 - sitting area
 - 7 pcs YK Skaala 474 chair
 - 2 pcs small table NEW
 - 12 pcs high workstation
 - x pcs high desk NEW
 - 12 pcs high chair NEW
 - additional chairs
 - 40 pcs YK University chair, gray
 - 1-2 pcs space divider NEW
- Väre-workshop comments
 - But architecture students for example need desk work spaces
 - Also higher tables for studios, it would be nice to also stand while working
 - There is also other kind of teaching than just lectures, sketching etc



STATION OF NEW OPENINGS (3rd floor - K)

- OUTCOME: THEORETICAL
- USER: EVERYONE (E.G. BA/MA THESIS, RESEARCH WORK)
- Character: Desktop work, different levels/scales/types of working
- Seats: 93 pcs
- Furniture:
 - 36 pcs workstation
 - desk YK SP-table 80cm x 120cm
 - chair YK Sirkus 484X white
 - 6 pcs desktop computer (fixed workstation)
 - sitting area
 - 5 pcs YK Saturnus lounge chair
 - 2 pcs small table NEW
 - 12 pcs high workstation
 - x pcs high desk NEW
 - 12 pcs high chair NEW
 - additional chairs
 - 40 pcs YK University chair, gray
 - 1-2 pcs space divider NEW
 - 1 pc bookshelf old?

